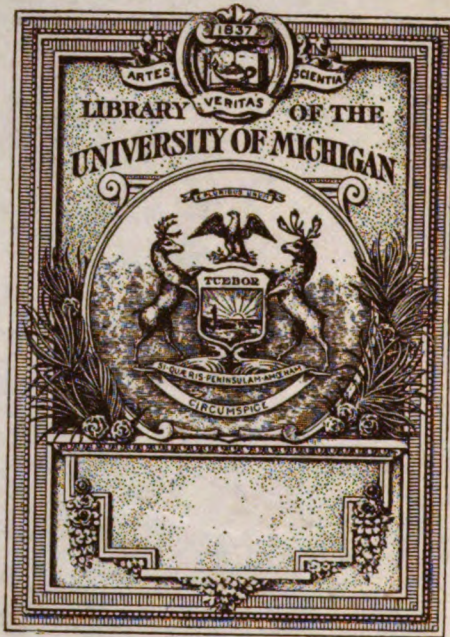
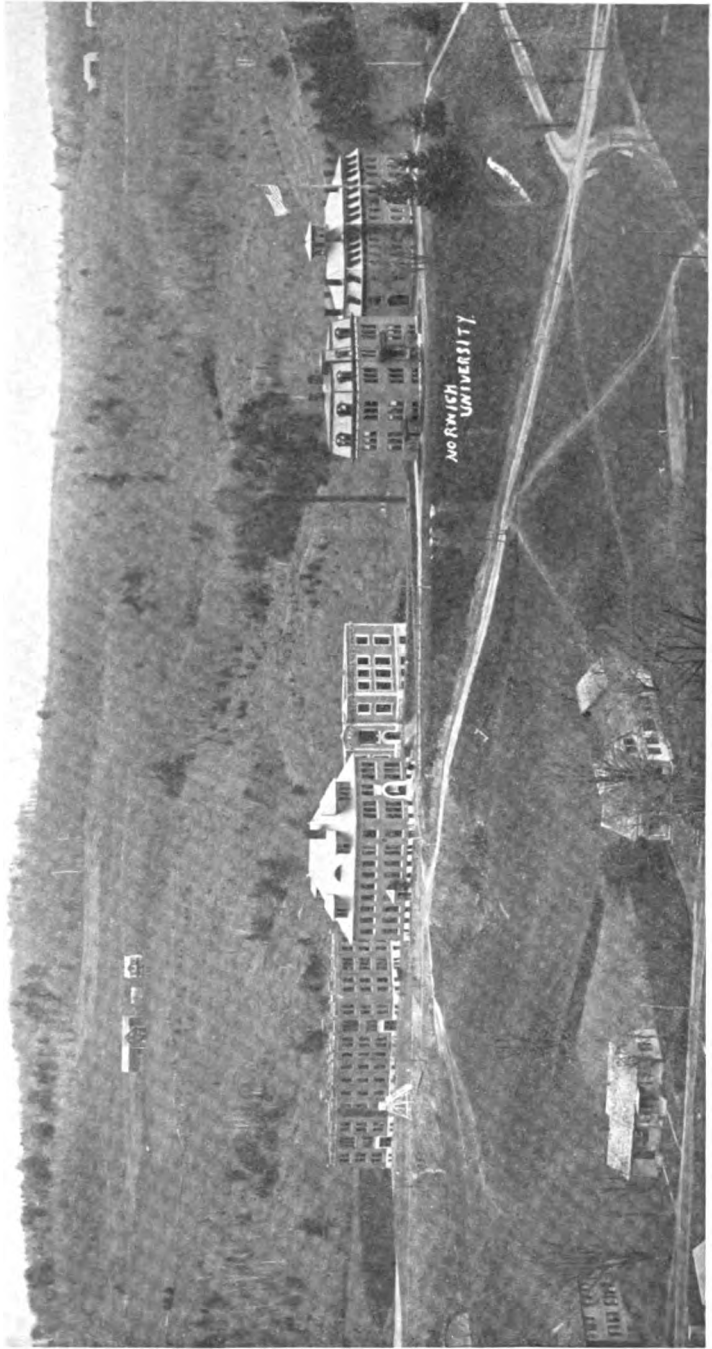


Norwich University, 1819-1911



RECEIVED IN EXCHANGE
FROM
N.Y. Public Library



NORWICH UNIVERSITY BUILDING, 1911.

Norwich University

1819-1911

Her History, Her Graduates, Her Roll of Honor

Published by

MAJOR-GENERAL GRENVILLE M. DODGE, C. E. A. M., LL.D.

Compiled and Edited by

WILLIAM ARBA ELLIS, B. S., A. M.

IN THREE VOLUMES

VOL. 3.

SKETCHES OF THE TRUSTEES, PRESIDENTS,
VICE-PRESIDENTS, PROFESSORS, ALUMNI,
PAST CADETS, HONORARY GRADUATES
AND UNDER-GRADUATES

1867-1915

Montpelier, Vt.

THE CAPITAL CITY PRESS

1911

GRANT ROEBUN HAIGHT, B. S.

Grant R. Haight, son of Roebun and Minerva (Deshor) Haight, was born in Ferrisburg, Vt., January 11, 1886. He prepared for college at the Vergennes (Vt.) High School and entered the University, September 12, 1905, graduating B. S. in C. E. in 1909; was a corporal, sergeant and ordnance-sergeant in the corps of cadets; member of the $\Sigma \Phi E$ Fraternity.

He was draftsman for a structural company in Lawrence, Mass., 1909-September, 1910. Since this last date, he has been instructor in Civil Engineering at the Northern Ohio University, Ada, Ohio.

He was married, May 31, 1910, to Hazel Hannah Fiske of Northfield, Vt.



Grant Roebun Haight.

CARL FREDERICK WILHELM GRAESER, B. S.

Carl F. W. Graeser, son of Carl and Anna (Jaescke) Graeser, was born in Windish-Marchwitz, Schlesien, Germany, April 24, 1875. He attended the Koenigliches Gymnasium at Kreuzburg, Germany, and was a sailor until 1901; was in the employ of the United Fruit Co., from 1901 until 1903; was engaged in construction work and was in the employ of the American Bridge Co., until 1905.

In September of this last year, he entered the University and graduated B. S. in C. E., in 1909; was a corporal, sergeant, 2d and 1st lieutenant and captain, Company C, in the corps of cadets; was honor graduate in military work; member of the Commons Club and its president in 1909.

He was foreman for the Hassam Paving Co., in Montreal, Canada, June 24-August 31, 1909; Lawrence, Mass., September and October, 1909. He was foreman for the J. G. White Construction Co., October, 1909-June, 1910; in charge of reinforced concrete work on dam, five miles of canal, flumes and gateways in Placerville, Cal.; was rodman and levelman on the construction of the Sacramento Southern Ry., Cal., for the Southern Pacific Ry., June, 1910-February, 1911. He was engineer with the Byllesby Engineering Co., of Chicago, March-September, 1911 on topographical survey and in charge of



Col. Frederick Wilhelm Graeser.

construction of five miles of canal, also flume and tunnel work in California. He is at present engaged in bridge work for the W. P. Railroad at Twain, Cal. He served during, 1902-05 in Company I, 1st Regiment, Vermont National Guard. He is a member of the I. O. O. F.; Oasis Encampment, and Canton Palestine of Brattleboro.

EARL SPENCER HARBOUR, B. S.

Earl S. Harbour, son of Lucius Grant and Laura Sophia (Hathaway) Harbour, was born in Woodford, Vt., March 1, 1887. At an early age, his parents removed to Bennington, Vermont, where he prepared for college. He entered the University, September 12, 1905, and graduated B. S. in C. E. in 1909; was a corporal, sergeant and post quartermaster-sergeant in the corps of cadets; played on the basket ball team, 1905-08; member of the $\theta \chi$ Fraternity.

He was successively a rodman, instrument man, inspector and draftsman on construction work, Northern Pacific R. R., in North Dakota and Kalama, Wash., July, 1909-November, 1910; instrument man for the Mountain Timber Company, on logging road, Kalama, Wash., November, 1910 to date.



Earl Spencer Harbour.

EARLE CRAWFORD HAYDEN, B. S.



Earle Crawford Hayden.

Earle C. Hayden, son of Fred Leslie and Hattie (Crawford) Hayden, was born in Barre, Vt., June 20, 1888. He prepared for college at the Spaulding High School, Barre, and entered the University, September, 1905, graduating B. S. in C. E. in 1909; was a corporal, sergeant and first lieutenant, Company D, in the corps of cadets; played on the foot ball team; member of $\theta \chi$ Fraternity. He was assistant engineer on construction work, Northern Pacific Railroad in North Dakota, 1909-10. He is now engaged in engineering work in Wisconsin.

This is a reproduction of a library book that was digitized by Google as part of an ongoing effort to preserve the information in books and make it universally accessible.

Google™ books

<https://books.google.com>

